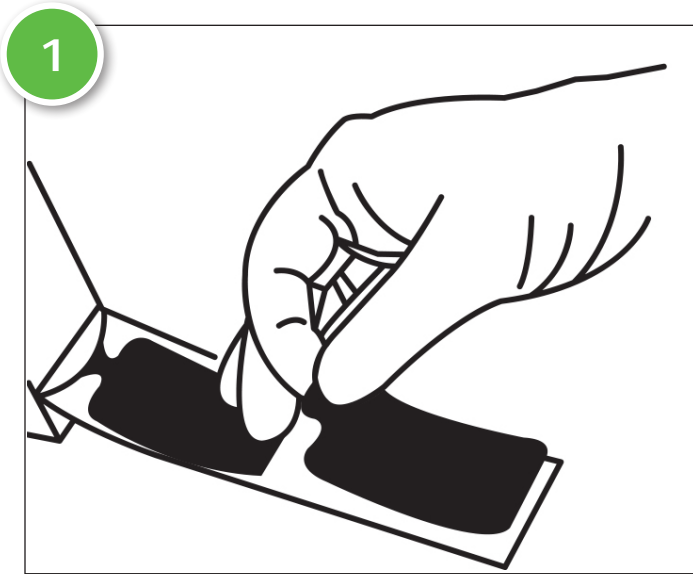
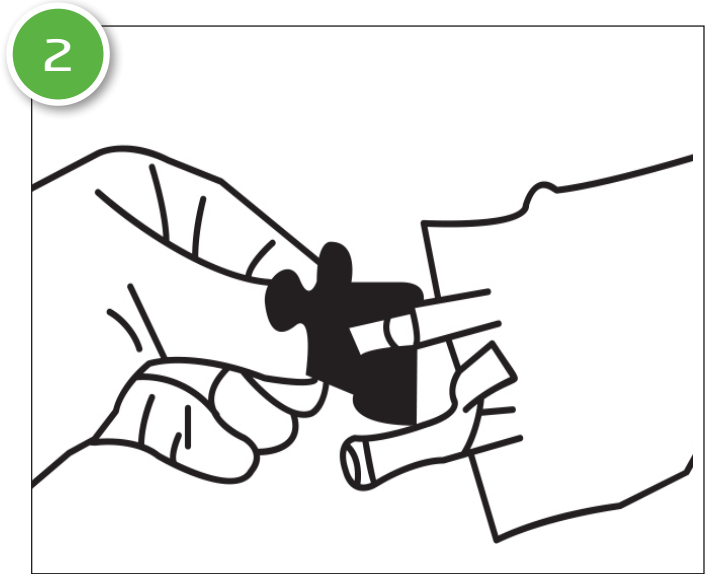


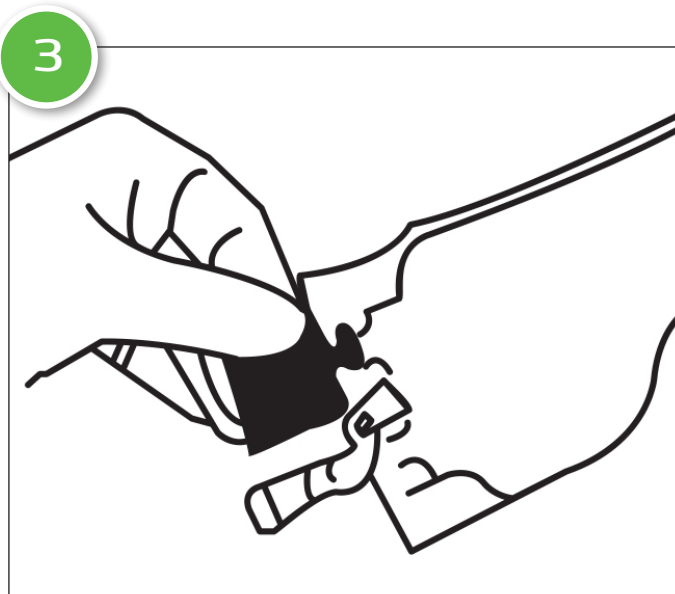
# Steri-Tamp® Large IV Bag Port Instructions



Remove Steri-Tamp® from liner.



Position the registration mark over center of the injection port.



Fold over top of injection port and press firmly on center and edges. Twist seal from side to side to seal properly.



Upon removal, the top layer will separate from adhesive strip.

Steri-Tamp® may provide assistance in monitoring whether injectable products have already been used by indicating "OPENED" when the metalized layer is removed. Steri-Tamp® cannot be a substitute for good hospital practice and procedures. PDC Healthcare does not guarantee or warrant sterility of the medications with which Steri-Tamp® may be used.

**STERILE:** Contents have been GAMMA sterilized. The target area remains sterile until removed from liner.