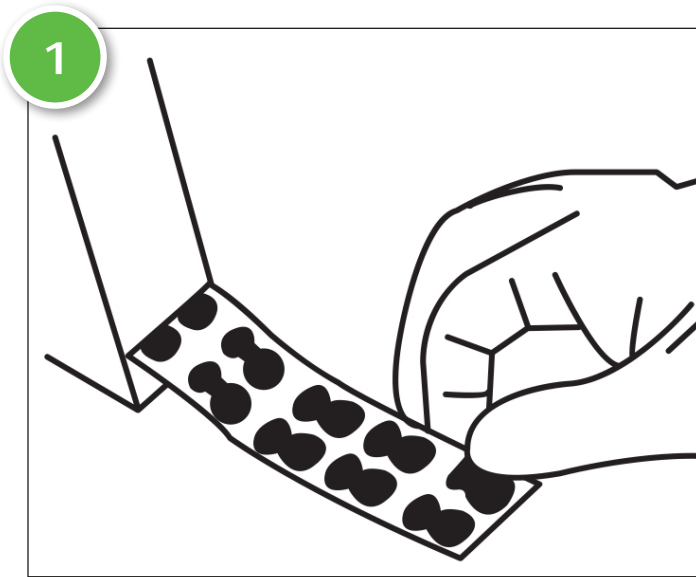
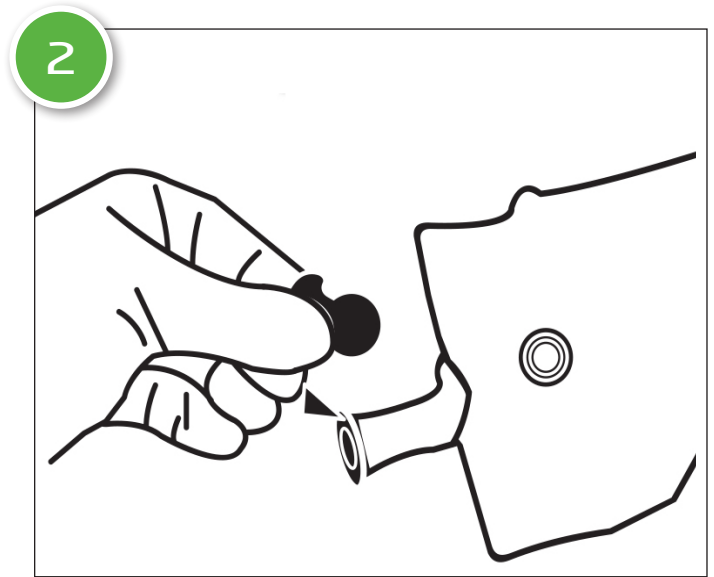


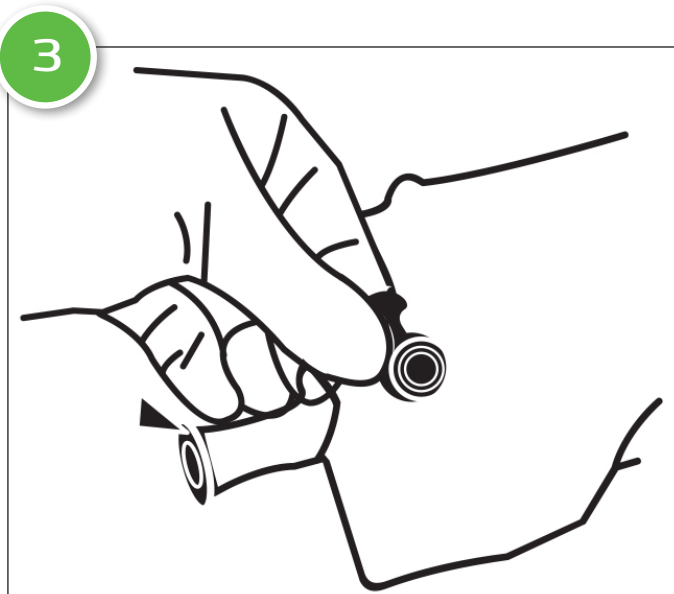
Steri-Tamp® Belly Button Bag Port Instructions



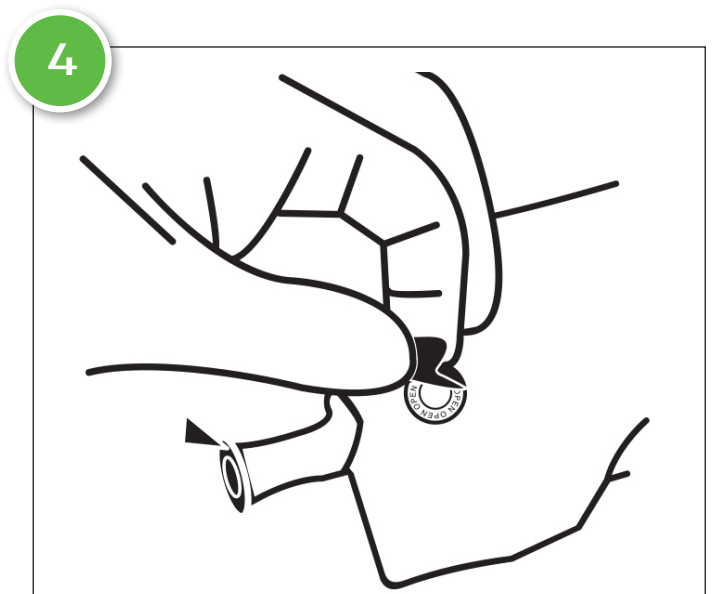
Remove Steri-Tamp® from liner.



Position the registration mark over the center of the injection port.



Press with thumb to firmly affix to port.



Upon removal, the top layer will separate from adhesive ring.

Steri-Tamp® may provide assistance in monitoring whether injectable products have already been used by indicating "OPENED" when the metalized layer is removed. Steri-Tamp® cannot be a substitute for good hospital practice and procedures. PDC Healthcare does not guarantee or warrant sterility of the medications with which Steri-Tamp® may be used.

STERILE: Contents have been GAMMA sterilized. The target area remains sterile until removed from liner.