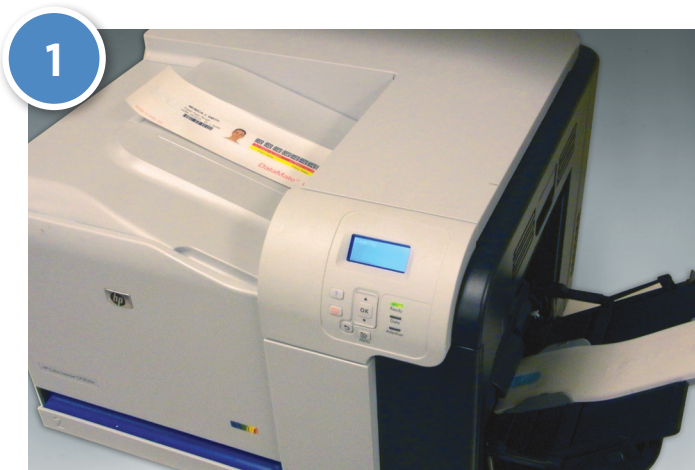


DuraSoft® Wristband Instructions



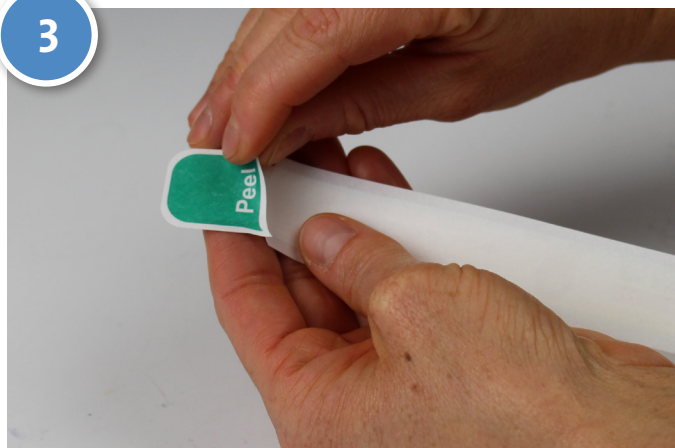
1

Print patient ID information and bar codes onto the DuraSoft® wristband sheet and remove it from your laser printer.



2

Lay sheet on a flat surface, press down on either corner, and gently pull to separate wristband from sheet.



3

Turn wristband over and remove green liner on back of tab to expose adhesive.



4

Affix wristband around patient's wrist.

Communicate multiple color code alerts on DuraSoft® easily and effectively with Ident-Alert® Clasps

- Meet standardization requirements by combining both colors and words
- Easy to read alerts
- Variety of stock colors and imprints
- Latex and Phthalate-Free



Ident-Alert® 8621
solid, colored, plastic
snaps with printed text