

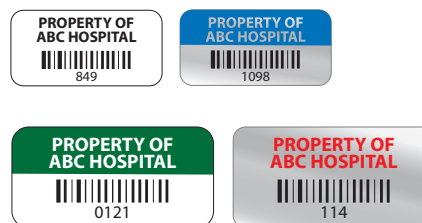
Biomedical Equipment Labels

Easily Identify & Manage Equipment



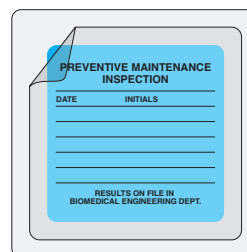
CUSTOMIZABLE PROPERTY ASSET LABELS

- » Made of durable poly-synthetic material that is resistant to water, alcohol, and cleaning solutions
- » Customized with facility name
- » High resolution barcode and consecutive number for reliable scanning
- » Lamination can be added for extra durability
- » Standard size 1½" x ¾" or 2" x 1"
- » Special material, color, and size are available upon request



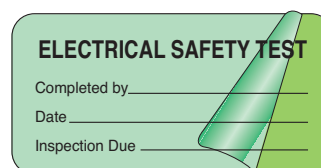
SPEE-D-SHIELD™ LABELS

- » Protects label from getting wet, scratched, or rubbed
- » Extends life of preprinted labels
- » Prevents removal of labels from prescription bottle



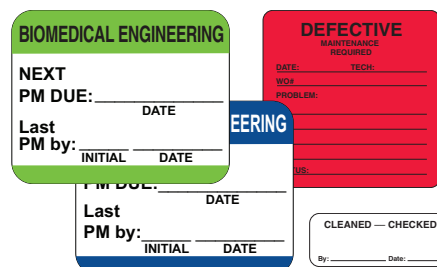
SELF-LAMINATING LABELS

- » Easy to apply, no laminating machine required
- » Label and seal with clear laminate film
- » Withstand wear and tear, and exposure to solvents, moisture and other conditions



PRE-PRINTED COMMUNICATION LABELS

- » Low cost, in stock, and ready to ship



CONTACT US TO LEARN MORE
Call 800.435.4242 or visit pdchealthcare.com/biomed

EDI ordering via GHX (Global Healthcare Exchange)